



REFINED LUXURY

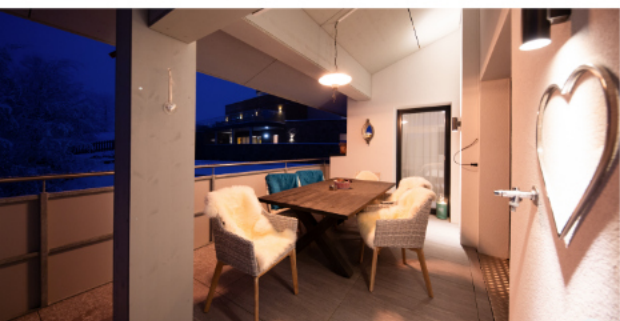
A HEARTFELT WELCOME –
IT'S GOOD TO HAVE YOU HERE



CONTENTS

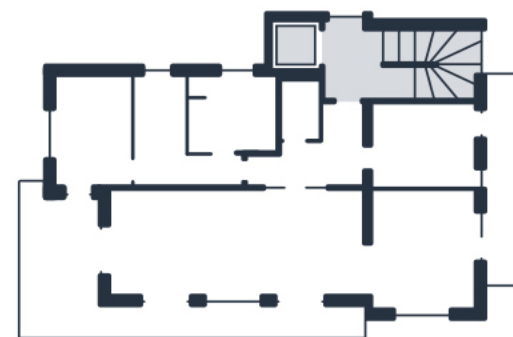
Lifestyle Apartment	3
Family Apartment	7
Garden Apartment	11
General Information	15
House Regulations	17
Serfaus A - Z	19
Restaurants & Bars	23
Local Amenities & Breakfast	25
Wellness & Dinner	26

DA PEATALA APARTMENTS



Experience elegant luxury over a generous 190 m² of living space in the middle of the breath-taking Tyrolean landscape. Thanks to the apartment's exclusive wellness area with sauna, you can enjoy instant relaxation after a long day in the mountains.

2. UPPER FLOOR



LIFESTYLE APARTMENT



6 PERSONS



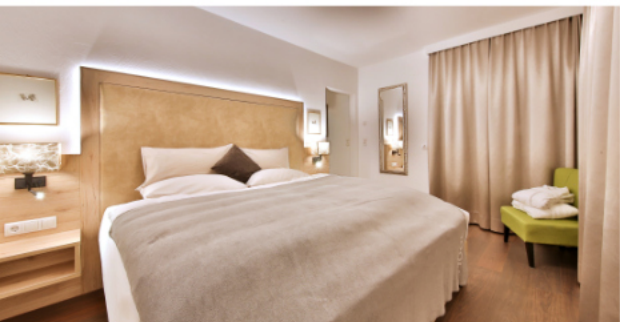
190 M² LIVING SPACE



MODERN KITCHEN



TERRACE AND BALCONY



In a truly exclusive touch, the Lifestyle Apartment features a private sauna on the top floor of the building, complete with a shower, quiet zone and aroma diffuser. It goes without saying that bathrobes and slippers are provided free of charge.



ATTIC FLOOR

LIFESTYLE APARTMENT

3 BEDROOMS

2 BATHROOMS

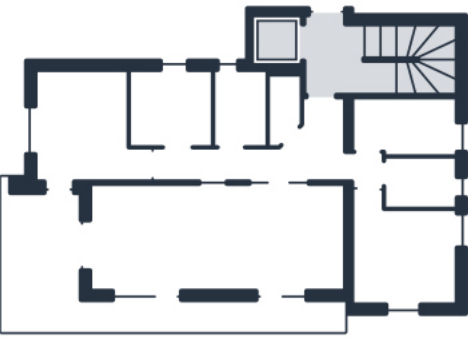
WELLNESS & SAUNA

3 FLATSCREEN TVs

DA PEATALA APARTMENTS



Enjoy a magical holiday with your loved ones in an inviting 120 m² of living space. The apartment offers families and groups of up to 6 people plenty of space and privacy in which to enjoy cosy days and nights.



I. UPPER FLOOR

FAMILY APARTMENT

6 PERSONS

120 M² LIVING SPACE

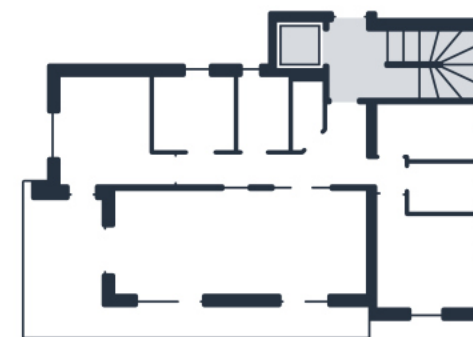
MODERN KITCHEN

TERRACE





The master bathroom (with window) has two sinks, a shower, a toilet and a bathtub. The integrated towel heater ensures that dry towels and bathrobes will be waiting for you to freshen up with after a long day in the mountains. Speaking of towels: we will happily change your towels in accordance with your wishes, and also provide complimentary shampoo, shower gel and soap.



I. UPPER FLOOR

FAMILY APARTMENT

3 BEDROOMS

2 BATHROOMS

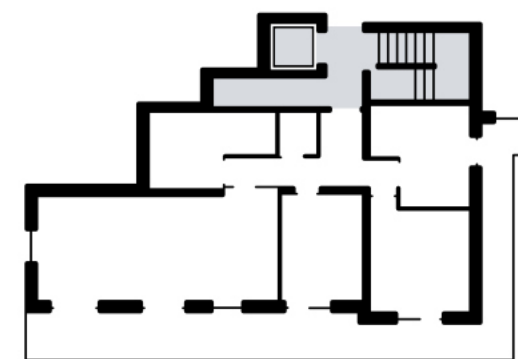
HIGH-SPEED INTERNET

3 FLATSCREEN TVs

DA PEATALA APARTMENTS



Enjoy fun-filled days and peaceful nights over 110 m² of living space. This apartment is ideal for families and groups of up to 6 friends who will enjoy being that little bit closer to the Tyrolean scenery thanks to direct garden access.



GROUND FLOOR

GARDEN APARTMENT

6 PERSONS

110 M² LIVING SPACE

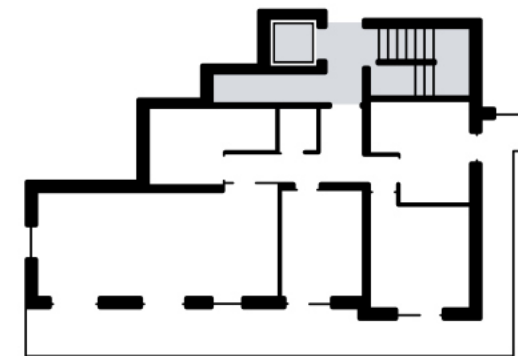
MODERN KITCHEN

TERRACE AND GARDEN

DA PEATALA APARTMENTS



The spacious bathroom has a two-sink console, a shower and a toilet. Blue lighting creates an atmospheric mood, while the generous bathtub is the perfect place to ease your limbs after an active day in the mountains.



GROUND FLOOR

GARDEN APARTMENT

DEAR GUESTS.

Welcome to our da Peatala Apartments – we are delighted that you have chosen to stay with us. In the interests of a pleasant stay, please find below general information about our apartments and services:

GENERAL INFORMATION	If you find anything in the furnishings to be lacking or require assistance, please don't hesitate to contact us. All objects that are in the apartment or on the balcony/terrace may and should be used by guests. Please treat all of the furnishings and inventory with care and look after the apartment. Please ensure that other members of your party abide by the terms and conditions of the rental.
ARRIVAL AND DEPARTURE	Arrival and departure days are counted as a calendar day. The apartments are available from 4pm (16:00) on the arrival day (earlier on request and according to availability). Please let us know your estimated time of arrival a few days in advance. The apartments are to be left by 10am (10:00) on the departure day (later on request and according to availability).
SANDWICH SERVICE	You are able to order a daily sandwich service at the reception of our partner hotel "Alpenjuwel Residenz". You will be billed for the costs directly at our partner hotel.
CHECK-IN / KEY BOXES	<p>Upon arrival, you will receive the keys to your apartment at the reception of our partner hotel "Alpenjuwel Residenz" right next to our apartment house (Dorfbahnstrasse 21). If you arrive outside of the usual check-in time (from 08:00 to 20:00) we are able to prepare the key box on the left side of the entrance for your arrival. The code for the key box corresponds with your arrival date: Code format: ddmm // Example: 2. January = 0201</p> <p>The "Lifestyle" apartment (Top 1) is located on the upper floor of the house. The "Family" apartment (Top 2) can be found on the ground floor directly opposite the entrance door. The "Garden" apartment (Top 3) is located downstairs from the entrance.</p>
CHECK-OUT	The handover of the apartment is usually done in person at the reception of our partner hotel "Alpenjuwel Residenz". The keys will be exchanged and your open balance paid . It is not permitted to take away with you any objects, towels, dressing gowns etc. from the apartments.
TOWEL CHANGE	According to your need, towels can be changed daily upon request . In order to have your towels changed, please place dirty towels in the designated basket and put it outside your apartment door. When considering whether to have your towels changed, please think about the environment and help to protect our natural resources.

INTERNET / WI-FI

Every room has **free wireless internet access**.
SSID: Da Peatala
Password: daPeatalaSerfaus (case-sensitive)
Bandwidth / Connection speed: 100 Mbit (download) / 10 Mbit (upload)

PARKING

Free parking carports are available **directly in front of the apartment building** and further public parking spaces are located nearby. Optional there is also the possibility to rent **underground parking** from our partner hotel "Alpenjuwel Residenz". Our parking spaces are not monitored and used entirely at your own risk. The landlord is not liable for any theft or damage that occurs to any vehicle or its contents while parked or driving on the property.

CLEANING AND WASTE DISPOSAL

The **garbage cans** for the **waste disposal** can be found in the **metallic container** at the **left side of the apartment house** (residual and organic waste) and at the **entrance of the underground parking** of our partner directly **opposite of the house entrance** (paper, glass, metal and plastic waste). Rubbish, food waste and leftovers, sanitary products, fat and dangerous fluids etc. are not to be emptied into the kitchen or bathroom sinks, toilets or showers as these can cause serious blockages. Guests are expected to leave the apartment in a neat and clean condition (tidied up, kitchen cleaned, used crockery in the dishwasher, rubbish in the appropriate bins etc.). The landlord will carry out a final clean upon the guests' departure.

KEYS

You will be given **two keys**, which fit the door to the apartment and also the main house door. Key boxes will be made available upon request. Please do not give your keys to any third party. If the keys are lost, the guest is liable for the full cost of replacements.

SKI AND BIKE STOREROOM

Ski and snowboard equipment (skis, ski boots, snowboards, toboggans etc.) are to be kept in the **ski room** in the cellar. Ski and snowboard boots can be dried on the designated radiators. For **mountain and e-bikes**, we can provide you with a separate **storage room in the carport**, which you are able to lock with your apartment key. The landlord is not liable for any theft or damage that occurs while storing equipment.

TV / RADIO / STREAMING

All apartments have **3 flat-screen TVs** with which you are able to receive over **100 international TV and Radio channels** in the apartments. Furthermore, you have access to the **streaming service Amazon Prime Video**.

WASHING MACHINE

Upon request, you may use the **washing machine** downstairs **free of charge**.

PAYMENT METHOD

The open balance can be paid in **Cash** (Euro), with **ATM** (EC card, Maestro), **bank transfer** (advance payment) or **Credit Card** (Mastercard, Visa, AMEX). Foreign currencies aren't accepted..

DEAR GUESTS.

So that all of our guests can enjoy their stay, we kindly ask you to abide by the following house rules. By booking and arriving at the apartments, you agree to accept the house rules:

LEAVING THE APARTMENT (ON A DAILY BASIS)	Windows and doors are to be closed when leaving the apartment.
ELECTRICAL EQUIPMENT	Electrical equipment (TV, radio, computer, lamps etc.) are to be put in standby mode or switched off when not being used.
WASTE DISPOSAL	Rubbish is to be sorted into general waste, glass, paper and packaging. Appropriate garbage cans can be found in the metallic container at the left side of the apartment house (residual and organic waste) and at the entrance of the underground parking of our partner directly opposite of the house entrance (paper, glass, metal and plastic waste). All rubbish bins (including those in the bathroom) are to be used only with rubbish bags, which are to be tied and deposited in the general waste bins. Rubbish, food waste and leftovers, fat and dangerous fluids etc. are not to be emptied into the kitchen or bathroom sinks, toilets or showers. Please avoid everything that could cause blockages of the pipes (for example, throwing sanitary products into the toilet).
LIABILITY	Parents are responsible for their children. We do not accept any liability for valuable items or accidents.
RIGHT OF ACCESS	In specific circumstances it may be necessary for the landlord to enter the apartment without prior notice.
BAN ON PETS	Pets are not allowed in any areas of the house.
DEPOSIT / DAMAGE LIABILITY	All objects that are in or belong to the apartment may and should be used by guests (please refer to instruction manuals or descriptions). Please treat all the furnishings with care. Guests are liable for all injuries and impairments resulting from the rented rooms, objects and equipment when these are not used in a fitting and proper way. Damages of any sort that occur to fixtures and fittings, equipment, furniture, floors, bedding, mattresses etc. must be reported immediately. In the case of damages, the guest is liable for the cost of the item's replacement.

NO ADDITIONAL OR UNREGISTERED GUESTS	Additional guests in the apartments are prohibited. The number of guests stated in the rental agreement may not be exceeded. Leaving the apartment in the care of a third party is not allowed. The landlord must be notified of potential changes to the number of guests before the guests' arrival. Contravention will result in a fine of € 200 per day.
SMOKE ALARM	If smoke is detected in the apartment, the smoke detector automatically triggers an alarm. In the event of a fire, contact the local fire brigade immediately (Tel. 122). If the smoke detector is activated by a false alarm, please air the apartment thoroughly by opening the windows and doors. As soon as the smoke clears, the alarm will go off automatically.
SMOKING BAN	There is a strict smoking ban in the apartments and all other areas of the house. Contravention will result in a fine of € 200. Smoke detectors are fitted in all rooms. Smoking is only permitted on the balcony and terrace.
NIGHT QUIET	In the interests of our guests and neighbours, we kindly ask you to observe night quiet between 10pm (22:00) and 7am (07:00). During this time noise is to be reduced to room level.
OUTDOOR FOOTWEAR IS NOT PERMITTED IN THE APARTMENTS	Entering the apartments in outdoor footwear (whether ski boots or street shoes) is not permitted. Ski boots can be left in the ski room in the cellar. House slippers are provided for wearing in the apartments.
BAN ON EVENTS AND PARTIES	Events and parties are strictly forbidden. Contravention will result in a fine of € 500.

Thank you very much for your understanding and cooperation. Should you have any questions, please don't hesitate to get in touch with your contact person in Serfaus or via the contact details below. We wish you a wonderful stay in our da Peatala Apartments in Serfaus.

With best wishes,
Familie Lechleitner
da Peatala Apartments

DOCTORS AND PHARMACIES	MED Serfaus - Dr. Köhle / Doctor and home pharmacy Dorfbahnstrasse 79, 6534 Serfaus S1 Center, bottom station of the Komperdellbahnen lifts +43 (0) 5476 53 000 info@medserfaus.at www.medserfaus.at	General practitioners (appointments by telephone) Dr. Robert Stefan in Fiss +43 5476 606 60 Dr. Christoph Stengg in Fiss +43 5476 201 44 Dr. Klaudia Stengg in Fiss +43 5476 609 0 Dentists (appointments by telephone) Dr. Karin Antretter in Prutz +43 5472 237 7 Dr. Judith Csobod in Ried +43 5472 212 55
	BANK	Raiffeisen Bank Serfaus Dorfbahnstrasse 41 – 43, 6534 Serfaus Monday to Friday 08:30 to 12:00 and 14:00 to 17:00 Wednesday 08:30 to 12:00 Volksbank Serfaus Untere Dorfstrasse 23, 6534 Serfaus Monday and Friday 08:00 to 12:00 and 14:00 to 16:00 Tuesday to Thursday 08:00 to 12:00

DORFBAHN / METRO

The metro operates **daily from 08:00 to 19:00** between the lower ski lift stations and the apartments: comfortable transport for skiers and snowboarders, free of charge. The stations **'Parkplatz'** (Car Park / 200 m)' and **'Kirche'** (Church / 300 m)' are approximately 3 minutes on foot from the apartments.

Serfaus - Metro Stations

0,0 0,1 0,2 0,3 0,4 0,5 0,6 0,7 0,8 0,9 1,0 1,1 1,2 1,3

Distance (in kilometer)

DRIVING BAN IN SERFAUS IN WINTER	Please observe the driving ban in the entire village, as well as the one-way system. Only arrivals and departures by vehicle are allowed. Should you wish to leave Serfaus during your stay, please take the Visitor Card with you in order to be able to drive back to the apartments.		
EMERGENCY NUMBERS	Emergency services 133 Fire brigade 122 Ambulance 144	Local Police Serfaus +43 (0)676 846 236 460 Police Station Ried +43 (0)59 133 7147 100 Hospital Zams +43 (0)5442 600 0	
BREAKDOWN SERVICE / MOTORISTS CLUB	KFZ Wachter / Pfunds +43 (0)5474 5404 Towing service Haim / Zams +43 (0)664 221 57 15 ARBÖ-Puncture service 123	ÖAMTC Landeck / Zams +43 5442 632 61 ÖAMTC roadside assistance 120 ÖAMTC street information +43 5412 332 0	
PISTE RESCUE	Piste Rescue Serfaus Station: Middle station Komperdell, Scheid +43 5476 6203 319 Piste Rescue Fiss-Ladis +43 5476 6396	Mountain Rescue Serfaus +43 5476 6152 Mountain Rescue Fiss-Ladis +43 5476 6710	
POST (BY THE TOWN HALL)	Town hall Serfaus Gänsackerweg 2, 6534 Serfaus Monday to Friday from 08.00 to 12.00	+43 5476 6210 gemeinde@serfaus.gv.at www.serfaus.gv.at	
HORSE RIDING AND CARRIAGE RIDES	Darrehof Serfaus Dorfbahnstrasse 50, 6534 Serfaus	+43 5476 6226 www.darrehof.at	
TOBOGGANING	In Serfaus and Fiss there are tobogganing runs that can be reached on foot or by cable car:	Serfaus: Komperdell (Distance: 4 km) Fiss: Steinegg (Distance: 3 km)	
SKI AND SNOWBOARD SCHOOL	Ski School Serfaus Dorfbahnstrasse 79, 6534 Serfaus +43 5476 62 68	For beginners and advanced – private or group lessons. Booking and registration in the ski school office. www.skischule-serfaus.com	

SKI AREA / CABLE CARS	Tyrol's skiing area, which was created by joining the ski areas of Serfaus and Fiss-Ladis, is an extensive region stretching between 1,200m and 2,820m and is far more than just a combination ski pass. For beginners and advanced, and also for families, the array of pistes on the high plateau is ideal: wide pistes with lots of space – including for carving – allow for skiing at all levels. 204 kilometers of piste are just waiting to be discovered.			
	Transportation hours:		Adventure Night:	
	Dorfbahn (Zubringer zu den Seilbahnen)	07:45 to 18:45	Dorfbahn	07:45 to 23:30
	Komperdellbahn	08:30 to 16:20	Lazidbahn	18:15 to 20:45
	Alpkopf 4er, Familienbahn Gampen, Sunliner	08:45 to 16:20	Komperdellbahn	18:00 to 22:30
	Alpkopfbahn	08:30 to 16:00	Komperdell-Talfahrt	downhill until 23:00
	Lazidbahn, Stierlerhüttelift, Laustalbahn	08:45 to 16:00	Transportation hours Fiss-Ladis:	
	Königsleithebahn	09:00 to 16:10		
	Pezidbahn	09:10 to 15:45		
	Arrezjochbahn	09:30 to 15:45		
Masnerkopfbahn	09:30 to 15:30			
Rodelbahn	10:00 to 18:00	Sonnenbahn Ladis-Fiss	08:30 to 16:20	
SKI PASSES	Ski passes can be bought directly at the cable car. The Serfaus-Fiss-Ladis Visitor Card gives you a discount on ski passes. You will be given the Visitor Card in person at check-in.			
	The following link will enable you to calculate your ski pass costs in advance: www.serfaus-fiss-ladis.at/en/Winter-holiday/Skipass-prices			
	<div>TYROL'S SKIING- DIMENSION SERFAUS</div>			



SPORT EQUIPMENT / RENTAL / PURCHASE	Bacher Sport Dorfbahnstrasse 73, 6534 Serfaus +43 5476 53 076 www.bachersport.com		Intersport Kirschner Dorfbahnstrasse 76, 6534 Serfaus +43 5476 60 300 www.intersport-kirschner.at	
	<i>Opening hours:</i> Monday to Sunday 08:30 to 18:00		<i>Opening hours:</i> Monday to Sunday 08:00 to 18:00 Wednesday (Adventure Night) to 23:00	
	An advance online reservation will receive a 10 % discount Visit the retailer's website for more information			
PETROL STATION	Can be found in 6531 Ried and 6522 Prutz (driving time approx. 15 min)			
TAXI	West Taxi Dorfbahnstrasse 40, 6534 Serfaus www.west.taxi +43 (0)660 58 51 830		<i>Airport transfers (incl. Innsbruck, Munich, Salzburg, Zurich etc.) can be organized upon request</i> info@west.taxi	
DIALING CODES / DIRECTORY ENQUIERES	Dialing codes: Netherlands 0031 Belgium 0032 France 0033 Luxembourg 00352		Dialing codes: Italy 0039 Schwitzerland 0041 Great Britain 0044 Germany 0049	
			Directory enquiries: Austria, EU and neighboring countries 118877 Worldwide 0900 118877	
TOURISM TAX / LOCAL TAXES	In all accommodation categories a local tax of € 2,60 per person and day must be charged (see 'tourism tax' on your bill). Children under 16 are not taxed.			
HOLIDAY GUIDE SERFAUS	The following link is to the official holiday guide for the region of "Serfaus – Fiss – Ladis": www.serfaus-fiss-ladis.at/pdf/a-z-urlaubsfuehrer-en.pdf			

RESTAURANTS
IN SERFAUS
(VILLAGE)

- Arriba Serfaus**
Dorfbahnstrasse 21, 6534 Serfaus
+43 5476 203 42
www.arriba-serfaus.at
- Bondarosa Steakhouse**
Untere Dorfstrasse 31, 6534 Serfaus
+43 676 54 00 317
www.bonderosa.at
- Claudia Restaurant**
Mühlbachweg 2, 6534 Serfaus
+43 5476 62 71
www.hausclaudia-serfaus.at/unser-haus/restaurant
- Fauser Stadl**
Dorfbahnstrasse 49, 6534 Serfaus
+43 5476 62 76 100
www.fauser-stadl.at
- Hiasl's Stubn**
Dorfbahnstrasse 74, 6534 Serfaus
+43 5476 670 946
www.gabriela-serfaus.at/de/dining/restaurant-serfaus
- Hugo's Tapas Bar & Wine Lounge**
Herrenanger 11, 6534 Serfaus
+43 5476 62 11
www.cervosa.com/gourmethotel-serfaus-fiss-ladis-tirol/hugos-tapas-bar-wine-lounge
- Hugo's Trattoria & Pizzeria**
Malbrettweg 5, 6534 Serfaus
+43 699 16 211 005
www.cervosa.com/gourmethotel-serfaus-fiss-ladis-tirol/hugos-trattoria-pizzeria

- Köhles Kulinarium Restaurant & Pizzeria**
Dorfbahnstrasse 26, 6534 Serfaus
+43 5476 62 25
www.das-koehle.at/de/restaurant-kulinaiurm
- Madatschen Restaurant**
Madatschen 1, 6534 Serfaus
+43 5476 681 80
www.madatschen.at
- Noldi Stuben Restaurant**
Dorfbahnstrasse 42, 6534 Serfaus
+43 5476 65 00
www.noldis.at/restaurant
- Praemontan Restaurant**
Dorfbahnstrasse 79, 6534 Serfaus
+43 5476 200 77
www.praemontan.at
- S'Hannes Restaurant**
Untere Dorfstrasse 9, 6534 Serfaus
+43 5476 66 60 15
www.shannes.at
- VAYA St. Zeno Bar & Grill**
St. Zeno 3, 6534 Serfaus
+43 5476 533 02
www.vaya-stzeno-serfaus.at/kulinarik
- Zum Wohl Tirol**
Archleweg 5, 6534 Serfaus
+43 660 583 79 21
www.zumwohltirol.at



ENJOYMENT FOR
EVERY TASTE

SKI SLOPE
RESTAURANTS
(SERFAUS)

BARS, APRÈS SKI
AND NIGHTCLUBS

- Cervosa Alm**
+43 5476 62 11
www.cervosa.com/gourmethotel-serfaus-fiss-ladis-tirol/cervosa-alm
- Kölner Haus**
+43 5476 62 14
www.koelner-haus.at
- Lassida**
+43 5476 6203 506
www.serfaus-fiss-ladis.at/de/Orte-Region/Von-A-Z/Restaurant-Lassida
- Leithewirt**
+43 5476 6203 701
www.serfaus-fiss-ladis.at/de/Orte-Region/Von-A-Z/Leithe-Wirt
- George Bar**
Dorfbahnstrasse 44, 6534 Serfaus
www.serfaus-fiss-ladis.at/de/Orte-Region/Von-A-Z/George-Bar
- Noldi Dorfschenke & Diskothek**
Dorfbahnstrasse 42, 6534 Serfaus
www.noldis.at/de/dorfschenke
- Oskar's Schirmbar**
Dorfbahnstrasse 47, 6534 Serfaus
www.post-serfaus.at

- Schalber Alm**
+43 5476 60 22
www.schalber.com/de/1t1/schalber-alm
- Skihütte Masner**
+43 5476 6203 800
www.serfaus-fiss-ladis.at/de/Orte-Region/Von-A-Z/Skihuette-Masner
- Seealm Hög**
+43 5476 6203 650
www.serfaus-fiss-ladis.at/de/Orte-Region/Von-A-Z/Seealm-Hoeg
- Ski Lounge**
+43 5476 6203 601
www.serfaus-fiss-ladis.at/de/Orte-Region/Von-A-Z/Ski-Lounge
- Patschi Pub**
Dorfbahnstrasse 82, 6534 Serfaus
www.patschi.at
- Schirmbar Mittelstation Komperdell**
Im Ski Gebiet bei der Mittelstation Komperdell
www.serfaus-fiss-ladis.at/de/Orte-Region/Von-A-Z/Schirmbar-Mittelstation-Komperdell

CULINARY IN THE MOUNTAINS

BAKERIES	Bäckerei Althaler (main store) +43 5476 5301 30 Dorfbahnstrasse 23, 6534 Serfaus	Bäckerei Althaler (Fiss) +43 5476 69 01 Untergasse 9, 6533 Fiss
	Bäckerei Althaler Snäck +43 5476 601 97 Dorfbahnstrasse 53, 6534 Serfaus	Baguette (in M-Preis) +43 5 0322 926 022 Dorfbahnstrasse 50, 6534 Serfaus
GROCERY SHOPS AND DELICATESSENS	Billa (Supermarket) Untere Dorfstrasse 27, 6534 Serfaus	Bsundrix (exklusive and unusual gifts) Dorfbahnstrasse 68, 6534 Serfaus
	M-Preis (Supermarket) Dorfbahnstrasse 50, 6534 Serfaus	Delikatessen Plangger (Delicatessen) Untere Dorfstrasse 28, 6534 Serfaus
BREAKFAST IN ALPENJUWEL RESIDENZ	Hotel Garni Alpenjuwel Residenz **** Dorfbahnstrasse 21, 6534 Serfaus +43 5476 60 663 www.alpenjuwel-residenz.at	Breakfast from 07:30 to 10:00 EUR 16,- per person and breakfast EUR 11,- per child (up to 15 years) and breakfast Children under 3 are free of charge
	Further information on registration is available from the Hotel Alpenjuwel Residenz reception	
BREAKFAST IN HOTEL 3 SONNEN	Hotel 3 Sonnen **** Untere Dorfstrasse 17, 6534 Serfaus +43 5476 62 07 www.dreisonnen.com	Breakfast from 07:30 to 10:00 EUR 20,- per person and breakfast EUR 12,- per child (up to 15 years) and breakfast EUR 10,- per child (up to 5 years) and breakfast Children under 5 are free of charge
	Further information on registration is available from the Hotel 3 Sonnen reception	

WELLNESS & SAUNA	Upon request, you may make use of the wellness and swimming facilities in our partner hotels. You can get detailed information about the offers directly from our partners:	
	Hotel Garni Alpenjuwel Residenz **** Dorfbahnstrasse 21, 6534 Serfaus +43 5476 606 63 www.alpenjuwel-residenz.at	Hotel 3 Sonnen **** Superior Untere Dorfstrasse 17, 6534 Serfaus +43 5476 62 07 www.dreisonnen.com
DINNER IN HOTEL 3 SONNEN	Hotel Garni Alpenjuwel **** Dorfbahnstrasse 73, 6534 Serfaus +43 5476 535 44 www.alpenjuwel.at	<i>Temple of treats in Hotel 3 Sonnen (upon request)</i> <i>Massage, bathing, wraps and beauty</i> <i>Open daily from 08:00 to 20:00</i>
	Hotel 3 Sonnen **** Untere Dorfstrasse 17, 6534 Serfaus +43 5476 62 07 www.dreisonnen.com	Dinner from 18:30 to 20:30 Theme evening set menu and Buffet Gourmet- und Gala Dinner Further information on registration is available from the Hotel 3 Sonnen reception


WE WISH YOU A
WONDERFUL STAY



da Peatala Apartments

Dorfbahnstrasse 19 | 6534 Serfaus

 +43 677 626 555 11
 daPeatala-Serfaus.at
 info@daPeatala-Serfaus.at

 instagram.com/daPeatala
 facebook.com/daPeatala
 twitter.com/daPeatala